
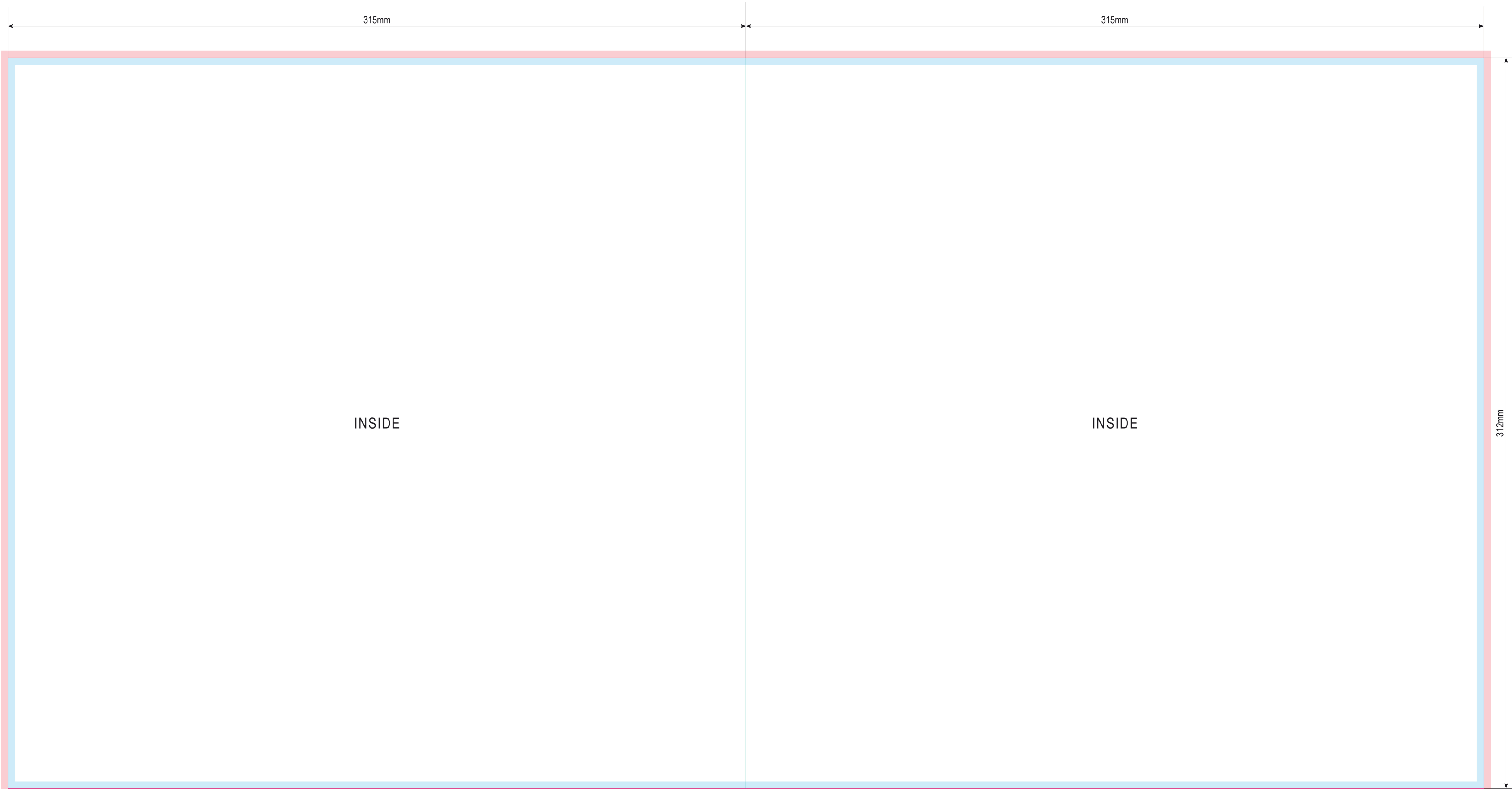



Bleed (3 mm) Tolerance field (3 mm)

Cutting line	—	Drawing	W05 (312,5/313)		 www.gmrecords.pl		
Folding line	—		Scale	1/1		Drawing number	W05 M (SIDE A)
Perforation line	- - - -		Date	3/11/2015		Method of Projection	INDD (CS) / PDF
paper weight: 300-350 gsm							



Bleed (3 mm) Tolerance field (3 mm)

Cutting line	—	Drawing	W05 (315/312)		 www.gmrecords.pl
Folding line	—		Scale	1/1	
Perforation line	- - - -		Date	3/11/2015	
paper weight: 300-350 gsm			Drawing number	W05 M (SIDE B)	
			Method of Projection	INDD (CS) / PDF	